

Eligibility

This workshop programme is open to all interested 2nd & 3rd year UG, PG Students & Faculty members.

Accommodation

Boarding & Lodging can be available at nominal cost with advanced booking.

Important Dates& Details

Deadline for registration :10.09.2018

Selection notification:12.09.2018

Registration Fee for, Students/Faculty: Rs.500/-

Participants can Register through the link:

<https://goo.gl/forms/PojFSCx4Qa3P5AjiO2>

A maximum of 30 registrations are permissible on the first come first served basis. Registration fee can be payable on the event day.

Contact Details

Mr. P. Sridharan - 9791147047
Ms. M. Bobby - 9994214158
Mr. Akshay Prakash - 9566520647
Mr. Danish Rajkumar - 9445164408

For any Clarification E-mail to:

bobby.m@rajalakshmi.edu.in

sridharan.p@rajalakshmi.edu.in

Chief Patron

Dr.(Mrs)Thangam Meganathan,
Chairperson.

Patron

Dr.S.N.Murugesan
Principal.

Conveners

Dr.R.Kalpana, Dean
Dr.S.Rajkumar, HoD
Department of Biomedical Engineering

Faculty Organisers

Mr.C. MuralidharanAoP/BME
Mr. P. Sridharan AP/BME
Ms.M.BobbyAP/BME

Student Coordinators

Mr. Akshay Prakash, Final Year, BME
Mr. Danish Rajkumar, Third Year, BME

Note

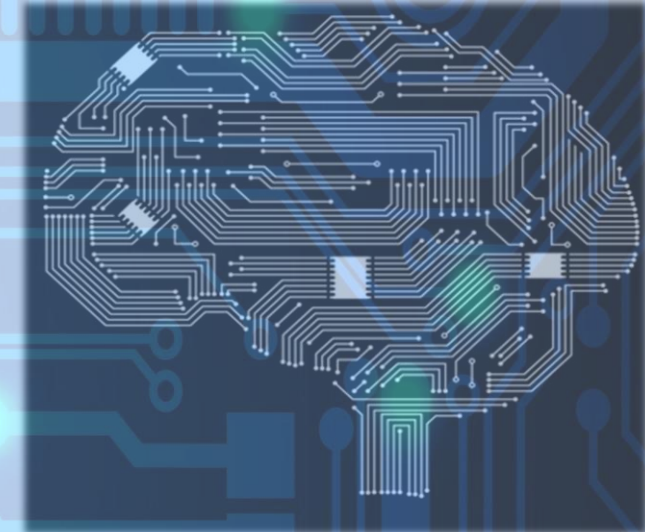
- ✦ Best participants will receive prizes.
- ✦ For more than six students registration from an institution one faculty can accompany.
- ✦ Participating candidates will receive certificate.



RAJALAKSHMI
ENGINEERING COLLEGE
An AUTONOMOUS Institution
Affiliated to ANNA UNIVERSITY, Chennai

Workshop with HANDS ON TRAINING On PCB Layout Design using EAGLE

26 – 27 September 2018



Organised by

Department of Biomedical Engineering
Rajalakshmi Engineering College
Thandalam, Chennai- 602105
Website: www.rajalakshmi.org



About the Institution



Rajalakshmi Engineering College, an autonomous institution affiliated to Anna University, Chennai, was established in the year 1997 under the aegis of Rajalakshmi Educational Trust whose members have had consummate experience in the fields of education and industry. The College has grown from strength to strength in the last 20 years and progressing towards Excellence in Engineering Education, Research and Development. Started with 3 Under Graduate programmes in Engineering with an annual intake of 180 students in 1997, the College presently offers 12 Under Graduate and 10 Post Graduate programmes, with an annual intake of 1950 students.

About the Department

Biomedical Engineering is the application of Engineering concepts and techniques in the field of Medicine. It combines the problem solving capability of engineers with the medical expertise of physicians to enhance the quality of life through health care process. Biomedical engineers bridge the medical and engineering

disciplines to provide an overall enhancement in the quality of health care and products. Rajalakshmi Engineering College has established the Department of Biomedical Engineering in the year 2006.

About the Program

This workshop aims in training the engineers/Scientists to make PCB's on their own. The Workshop begins with a brief overview on basic electronics components and different packaging of electronic components to help you attain conceptualization about component selection during circuit designing and ends with making a PCB of the designed circuit. It includes a detailed study structure, delivered & demonstrated live by our experienced facilitators. The outcome of the workshop is to make the participants design Circuit in CAD software like eagle and the fabrication of the same.

Course Topics

- ✦ Developing the PCB Design Schematic, auto and manual Routing of the medical device Circuit using Industry Standard Schematic Capture tools.
- ✦ Preparation of Board for Layout.
- ✦ Gerber file Creation and View.
- ✦ Practical hands on to demonstrate PCB fabrication of a circuit.

Workshop with HANDS ON TRAINING On PCB Layout Design using EAGLE 26 – 27 September 2018

REGISTRATION FORM

Name: _____
DOB: _____
Gender: Male / Female
Designation: _____
Department: _____
Institution: _____
Address: _____

Phone: _____ Mobile: _____
E-mail: _____
Accommodation required: Yes / No

DECLARATION BY THE CANDIDATE:

The given information is true to the best of my knowledge. I agree to abide by the rules and regulations governing the programme. If selected, I shall attend the course for the entire duration.

Date: _____
Place: _____

Signature of the Participant

The best place for Technological Innovation
To explore...!